

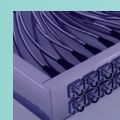
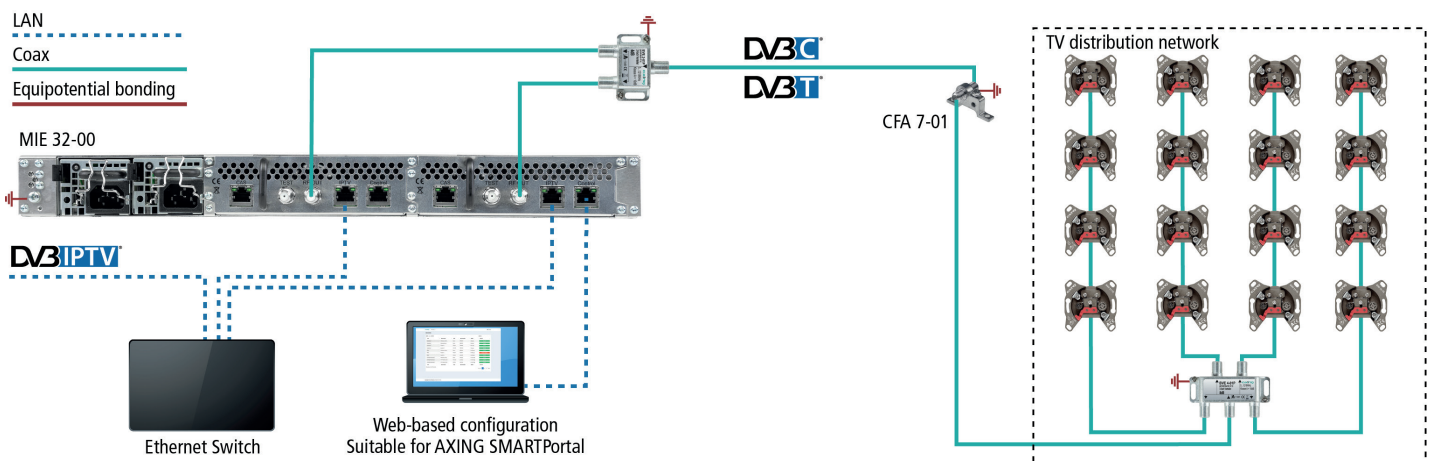
# IPQAM

- ✓ Modular system
- ✓ IPTV input (900 Mbps)
- ✓ Supports SPTS and MPTS (also mixed)
- ✓ Re-Multiplexing
- ✓ PID Filtering
- ✓ Output modulation DVB-C (J.83 Annex A/C) or DVB-T
- ✓ Web-based configuration
- ✓ Suitable for AXING SMARTPortal
- ✓ Supports SNMP
- ✓ 2 × redundant power supply units
- ✓ 19" housing, 1RU



### Available devices:

- MIE 8-00 Includes 1 module, supports SPTS and MPTS (also mixed), transmodulates max. 512 input streams in 8 DVB-C or 6 DVB-T output channels.
- MIE 16-00 Includes 1 module, supports SPTS and MPTS (also mixed), transmodulates max. 512 input streams in 16 DVB-C or 12 DVB-T output channels.
- MIE 32-00 Includes 2 modules, supports SPTS and MPTS (also mixed), transmodulates max. 2 × 512 input streams in 2 × 16 DVB-C or 2 × 12 DVB-T output channels.
- MIM 16-00 Extension module for MIE 8-00/16-00, for extension to 2 × 512 input streams and 2 × 16 DVB-C or 2 × 12 DVB-T output channels.
- MIS 8-16 Software extension for MIE 8-00, from 8 to 16 x DVB-C or from 6 to 12 x DVB-T output channels.



AXING AG

Gewerbehaus Moskau

Phone +41 52 - 742 83 00

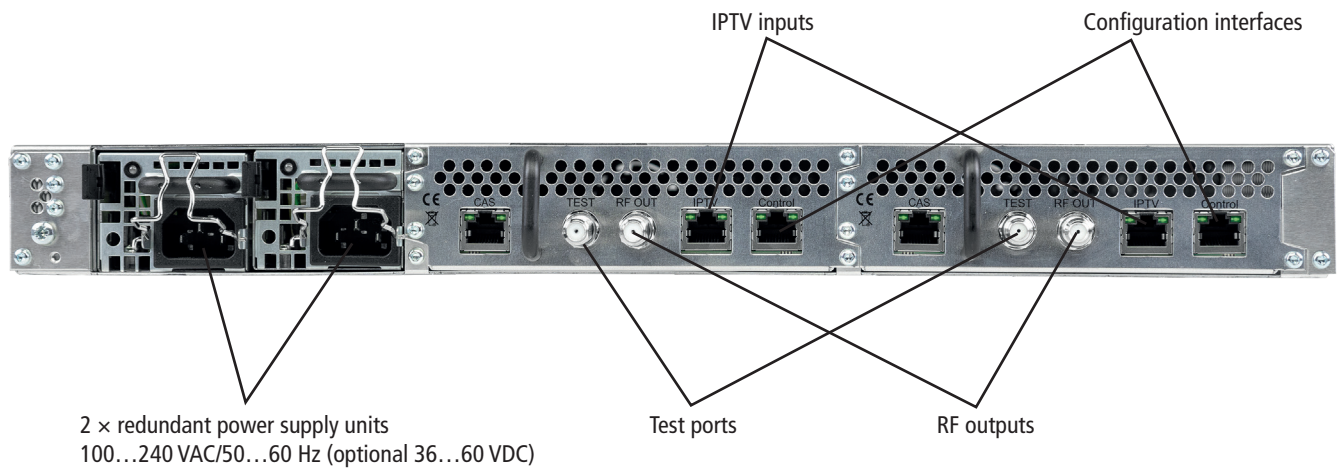
Fax +41 52 - 742 83 19

8262 Ramsen

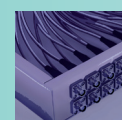
info@axing.com

www.axing.com

## Back panel



Type	MIE 8-00	MIE 16-00	MIE 32-00
<b>Input</b>			
Supported input transport streams		SPTS, MPTS	
Max. number of input streams (out of SPTS or MPTS)	512	512	2 x 512
Supported protocols IPTV input		UDP, RTP	
Total net data rate IPTV input (net load capacity of transport stream)	1 x 900 Mbps		2 x 900 Mbps
Input connectors	1 x RJ45, IEEE 802.3, 1000 Base-T		2 x RJ45, IEEE 802.3, 1000 Base-T
<b>Output</b>			
Output frequency range	109...1006 MHz @ DVB-C   109...862 MHz @ DVB-T		
Number of output channels	1 x 8 DVB-C (J.83 Annex A/C) 1 x 6 DVB-T	1 x 16 DVB-C (J.83 Annex A/C) 1 x 12 DVB-T	2 x 16 DVB-C (J.83 Annex A/C) 2 x 12 DVB-T
Output channels adjustable	S2...K87 @ DVB-C   S2...K69 @ DVB-T		
Output level	80...105 dBμV @ DVB-C   77...102 dBμV @ DVB-T		
Output connector	1 x F		2 x F
Output test port	-30 dB		
<b>Output modulation</b>			
Compliance	DVB-C (J.83 Annex A/C) DVB-T		
Modulation type	QAM32, QAM64, QAM128, QAM256 @ DVB-C QPSK, QAM16, QAM64 @ DVB-T		
Output transmission symbol rate	1...7,5 Mbps		
MER	≥ 40 dB @ DVB-C   ≥ 36 dB @ DVB-T		
FFT @ DVB-T	2k mode		
FEC @ DVB-T	1/2, 2/3, 3/4, 5/6, 7/8		
<b>Common</b>			
Configuration interface / CAS interface	1xRJ-45, IEEE 802.3, 10/100 Base-T		2xRJ-45, IEEE 802.3, 10/100 Base-T
Operation voltage	100...240 VAC/50...60 Hz optional 36...60 VDC		
Power consumption	30 W		60 W
Equipotential bonding connection	4 mm <sup>2</sup>		
Ambient temperature range (acc. to EN 60065)	-10°C...+50°C		
Dimensions (W x H x D) appr.	480 x 43 x 275 mm		



AXING AG

Gewerbehaus Moskau

Phone +41 52 - 742 83 00

Fax +41 52 - 742 83 19

8262 Ramsen

info@axing.com

www.axing.com