

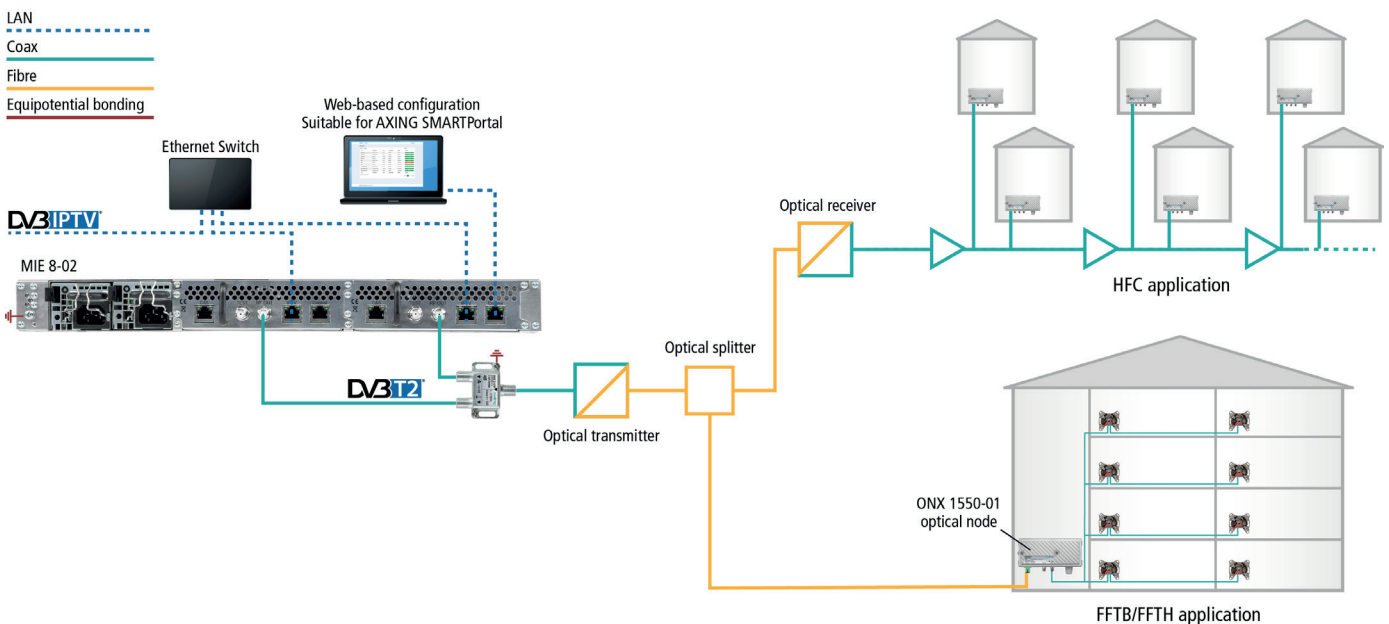
IP to DVB-T2

- ✓ Modular system
- ✓ IPTV input (900 Mbps)
- ✓ Supports SPTS and MPTS (also mixed)
- ✓ Re-Multiplexing and PID Filtering
- ✓ 4 or 8 DVB-T2 output channels (acc. to EN 302 755)
- ✓ Web-based configuration
- ✓ Suitable for AXING SMARTPortal
- ✓ Supports SNMP
- ✓ 2 × redundant power supply units
- ✓ 19" housing, 1RU



Available devices:

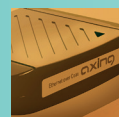
- MIE 4-02** Includes 1 module, supports SPTS and MPTS (also mixed), transmodulates max. 512 input streams in 4 DVB-T2 output channels.
- MIE 8-02** Includes 2 modules, supports SPTS and MPTS (also mixed), transmodulates max. 2 × 512 input streams into 2 × 4 DVB-T2 output channels.
- MIM 4-02** Extension module for MIE 4-02 for extension to 2 × 512 input streams and 2 × 4 DVB-T2 output channels.



SMARTPortal advantages:

The AXING SMARTPortal allows to connect any headend device to a cloud-based portal. When connected the customer has access to any device via the internet. The connection is password-protected and scrambled. The system will give the customer error messages to a dedicated e-mail address. Error messages occur in the following cases:

- ✓ Processor temperature > 90 °C
- ✓ Airflow temperature > 50 °C (this is temperature which is aspirated from outside through the fan)
- ✓ Modulator overflow
- ✓ Power supply failure
- ✓ Power supply temperature > 85 °C
- ✓ Input stream overflow
- ✓ RF output-level not according to settings



AXING AG

Gewerbehaus Moskau

Phone +41 52 - 742 83 00

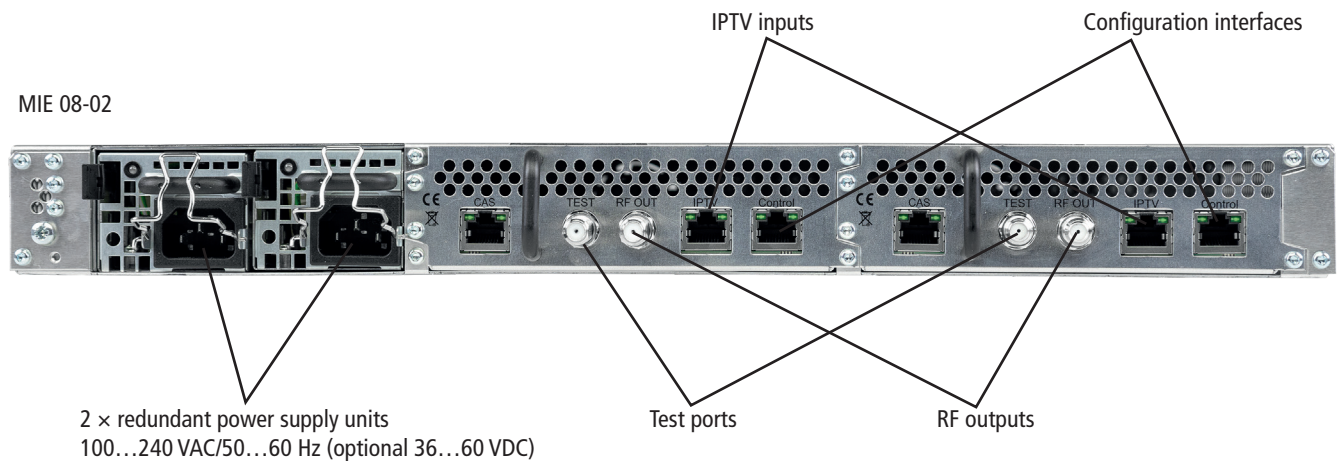
Fax +41 52 - 742 83 19

8262 Ramsen

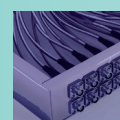
info@axing.com

www.axing.com

Back panel



Type	MIE 4-02	MIE 8-02
Input		
Supported input transport streams	SPTS, MPTS	
Max. number of input streams (out of SPTS or MPTS)	512	2 × 512
Supported protocols IPTV input	UDP, RTP	
Total net data rate IPTV input (net load capacity of transport stream)	1 × 900 Mbps	2 × 900 Mbps
Input connectors	1 × RJ45	2 × RJ45
Output		
Output frequency range	109...862 MHz	
Output channels adjustable	52...K69	
Number of output channels	1 × 4	2 × 4
Output level	77...102 dB μ V	
Output connector	1 × F	2 × F
Output test port	-30 dB	
Output modulation		
Compliance	DVB-T2 acc. to EN 302 755, mode A (single-PLP)	
Modulation type	QPSK, QAM16, QAM64, QAM256	
MER	≥ 43 dB	
FFT @ DVB-T2	1k, 2k, 4k mode	
FEC @ DVB-T2	1/2, 3/5, 2/3, 3/4, 4/5, 5/6	
Max. bitrate	47, 83 Mbps	
Common		
Configuration interface / CAS interface	1×RJ-45, IEEE 802.3, 10/100 Base-T	2×RJ-45, IEEE 802.3, 10/100 Base-T
Operation voltage	100...240 VAC/50...60 Hz Optional 36...60 VDC	
Power consumption	30 W	60 W
Equipotential bonding connection	4 mm ²	
Operating temperature range (acc. to EN 60065)	-10 °C...+50 °C	
Dimensions (W × H × D) appr.	480 × 43 × 275 mm	



AXING AG

Gewerbehaus Moskau

Phone +41 52 - 742 83 00

Fax +41 52 - 742 83 19

8262 Ramsen

info@axing.com

www.axing.com